

JYFLHJYA-2021

2021 02

2021

2021

	1
1	1
1.1	1
1.2	1
1.3	4
1.4	5
1.5	5
1.6	8
2	9
2.1	9
2.2	10
2.3	12
2.4	30
3	33
3.1	33
3.2	33
3.3	34
4	35
4.1	35
4.2	36
4.3	39
4.4	49
4.5	53
5	53
5.1	53
5.2	54
5.3	57
5.4	59

5.5	60
5.6	61
5.7	61
6	62
6.1	62
6.2	65
6.3	68
6.4	73
6.5	79
6.6	81
7	82
7.1	82
7.2	83
8	85
8.1	85
8.2	85
8.3	85
8.4	86
9	88
9.1	88
9.2	88
9.3	89
9.4	90
10	92
10.1	92
10.2	93
10.3	93
	94
	94

1	94
2	97
3	97
4	98
5	98
6	100
	101
1	101
2	103
3	103
4	104
5	105
6	106
	108
	108
1	108
2	108
3	109
4	112
5	112
	113
1	113
2	113
3	113
4	118
	119

1

1.1

1.2

1.2.1

1

2007 8 30

2007 11

1

2

1989 12 26

2014 4 24

2015 1 1

3

2017 6 27

4

2018 10 26

5

(

2020 9 1)

6

2002 8 29

2014 8 31

				2014	12	1		
7								
			2008	10	28		2009	5 1
8							2018.12.29	
1.2.2								
1						2005	1 26	79
		2006	1	8				
2						2014	119	
3				2015				
4				2021		15	2020	11 5
	2021	1	1					
5					2013	12	4	32
		2013	12	7				
6						2002	4	30
57			2002	5	12			
7						[2015]	34	
8							[2009]	130
9						[2011]	17	
10								
	[2015]	4						
11								
2016	74							
12						2021		
16	2020	11	5		2021	1	1	
13						HJ 941-2018		
14								
15						HJ 589-2010		
16						DB 37/T 3599-2019		

17

18

(2009 56)

19

2012 5

20

21

[2016]141

22

[2017]37

23

()

24

25

1.2.3

2011	142		
18			2020
30			
19		HJ589-2010	
20			GB 28662-2012
1.2.4			
1			
		2016	12
2			
	2019	9	
3			
		2020	12
4			
1.3			
1			
2			

3

1.4

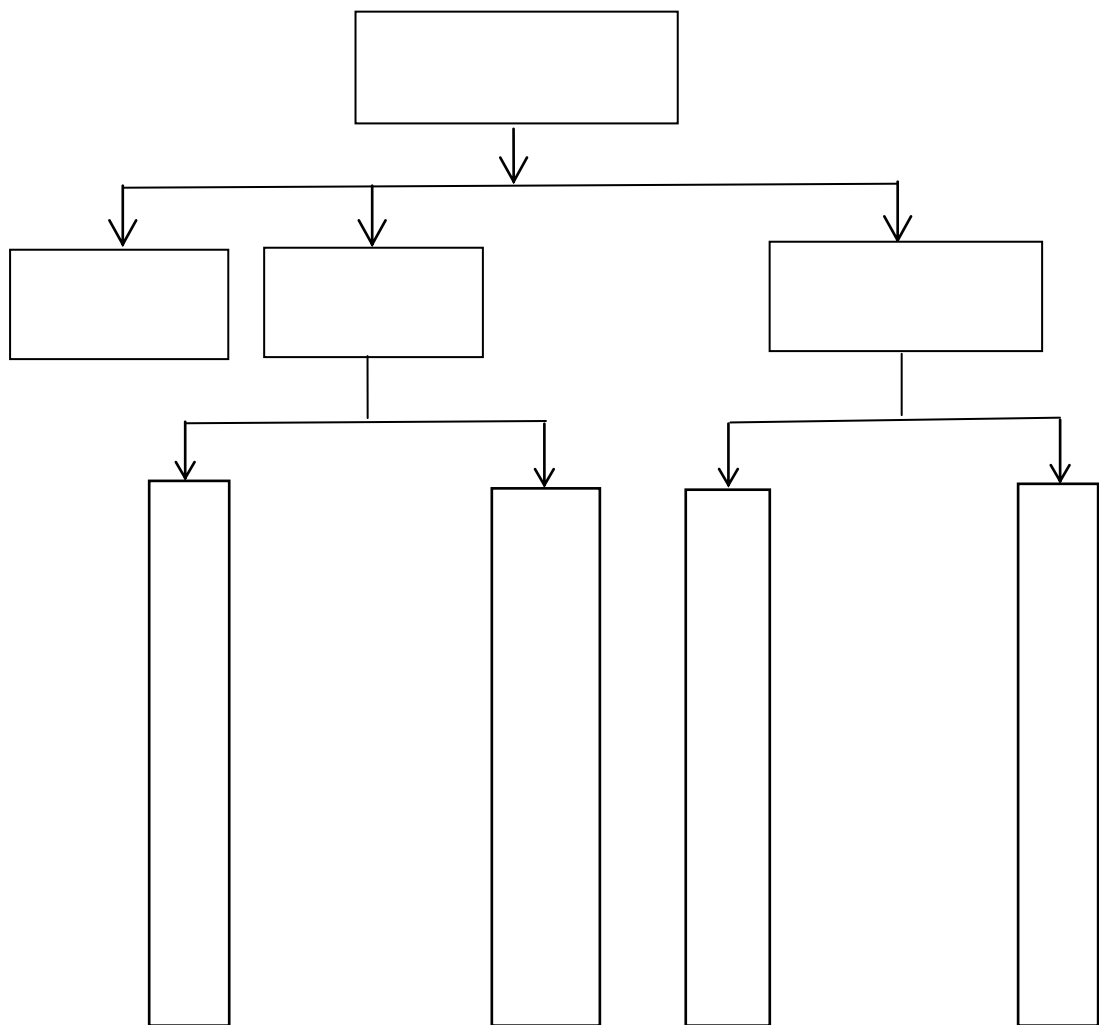
1

2

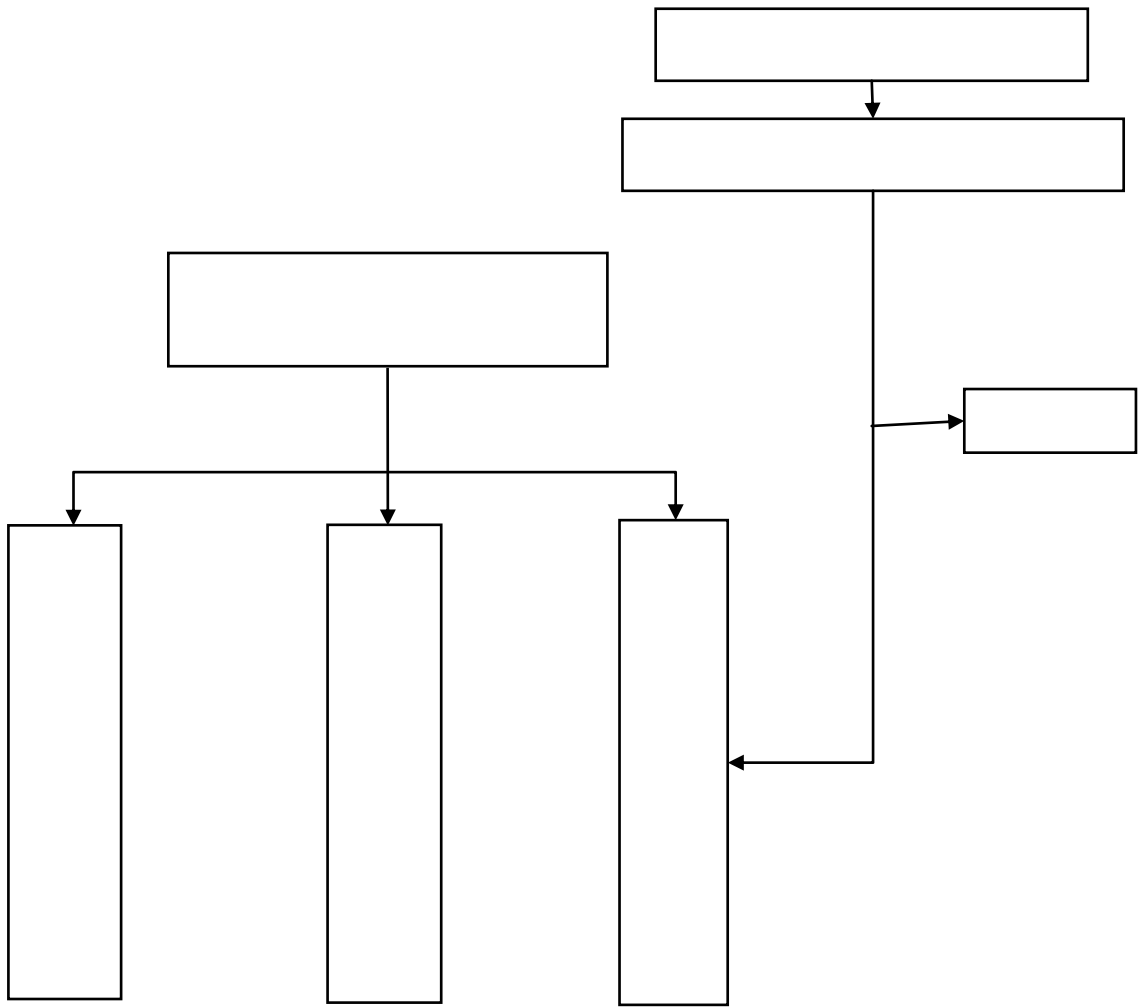
3

4

1.5



1-1



1

1-2

2

1.6

1

2

3

4

5

6

7

2

2.1

2.1.1

2 105m² 2
320m² 2 420m³ 1 1250m³ 2 1650m³

SO₂ NO_x

2 105m² 2 420m³ 1 1250m³ SO₂ NO_x 2
320m² 2 1650m³

[2016]130

2.1-1

			913712001695745282
			13561713679
			qingjin1999@163.com
	1964		C3110
	952		
	36°18'19.00"N 117°32'32.00"E		
	952	365	24

2.1.2

1#-5#

TRT

1#-4#

2

2.2

1

36°02'

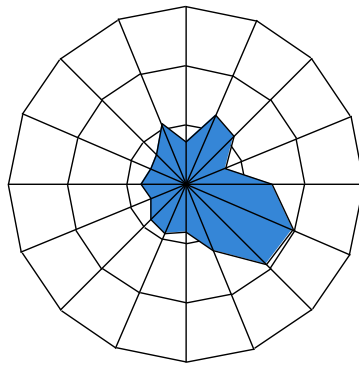
36°33'

117°19'

117°58'

1739.61

2



2-1 20 1996 2015

5

5.157

4.778

2.21

1.728

80%

6

17.40

13.27

76.3%

3

17.27%

1.12

6.42%

4.84

0.0704

42

17

78

4

2.18

71 177 471 5 8

13 7 15 23 2 3 6

2.3

2.3.1

2.3-1

2.3-1 1

			105m ²	×2()	320 m ²	×2()			
			600m		200m		12	m ²	
			1	45m ³	14	2	800m ³	36	
			5						
			2	1000m ³			2#		

2.3-1 2

			2×420m ³	1280m ³	2×1650m ³				
			TRT	4					
			4×75m	4×50m					
			1#	2#3#	4#	5#	4		

2.3.2

2.3-2

2.3-2

			t/a
1		PB FB P +	5010916
2			627166.5
3		3~0mm	615576
4		25~0mm	313058
5		40mm	33013.6
6			818251.6
7			236099.5
8			3360
1		10 ⁴ kWh/a	30208
2		10 ⁴ m ³ /t	111.6
3		10 ⁴ m ³ /a	3948
4		10 ⁴ GJ/a	26.28
5		10 ⁴ Nm ³ /a	1216.8
			t/a
1		5~150mm	6441373
3			103020
			t/a
1			5786326
2		6~18mm	424876
3		5~30mm	1050221
4			1773042
5			516525

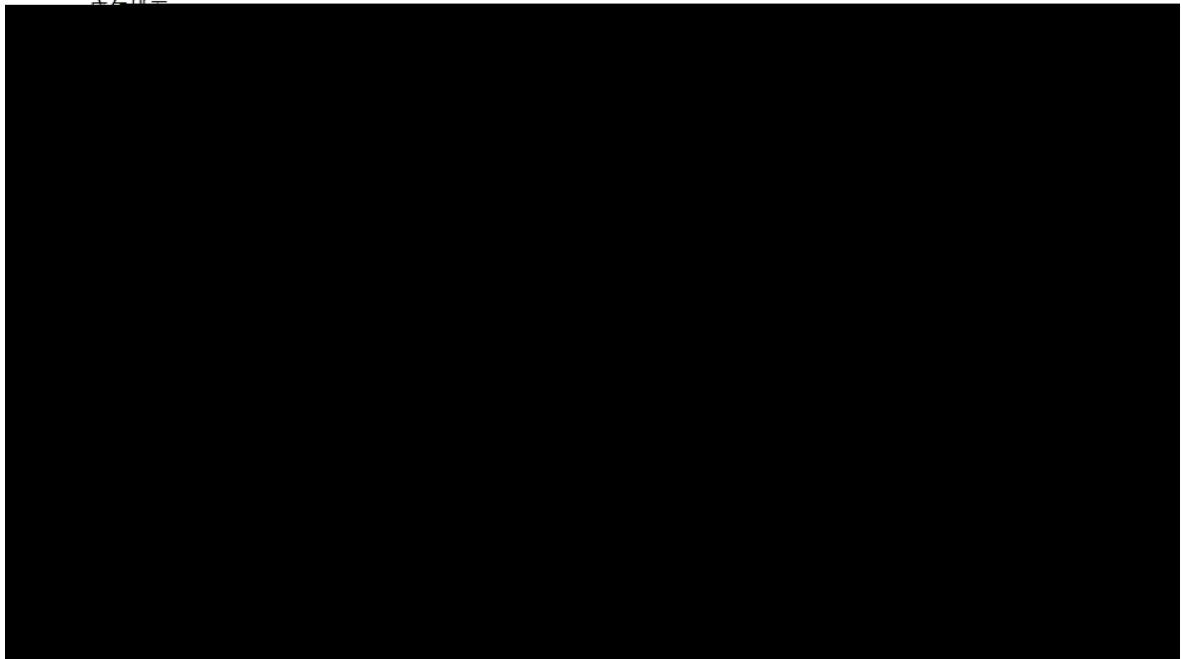
1		10^4 kWh/a	10160.92
2		10^4 m ³ /t	224.63
3		10^4 m ³ /a	273876.48
4		10^4 m ³ /a	1172
5		10^4 t/a	259.56
6		10^4 Nm ³ /a	9142
7	2%	10^4 Nm ³ /a	22177
8		10^4 Nm ³ /a	14094
1	+	t/a	4258890

2 en-55] 1

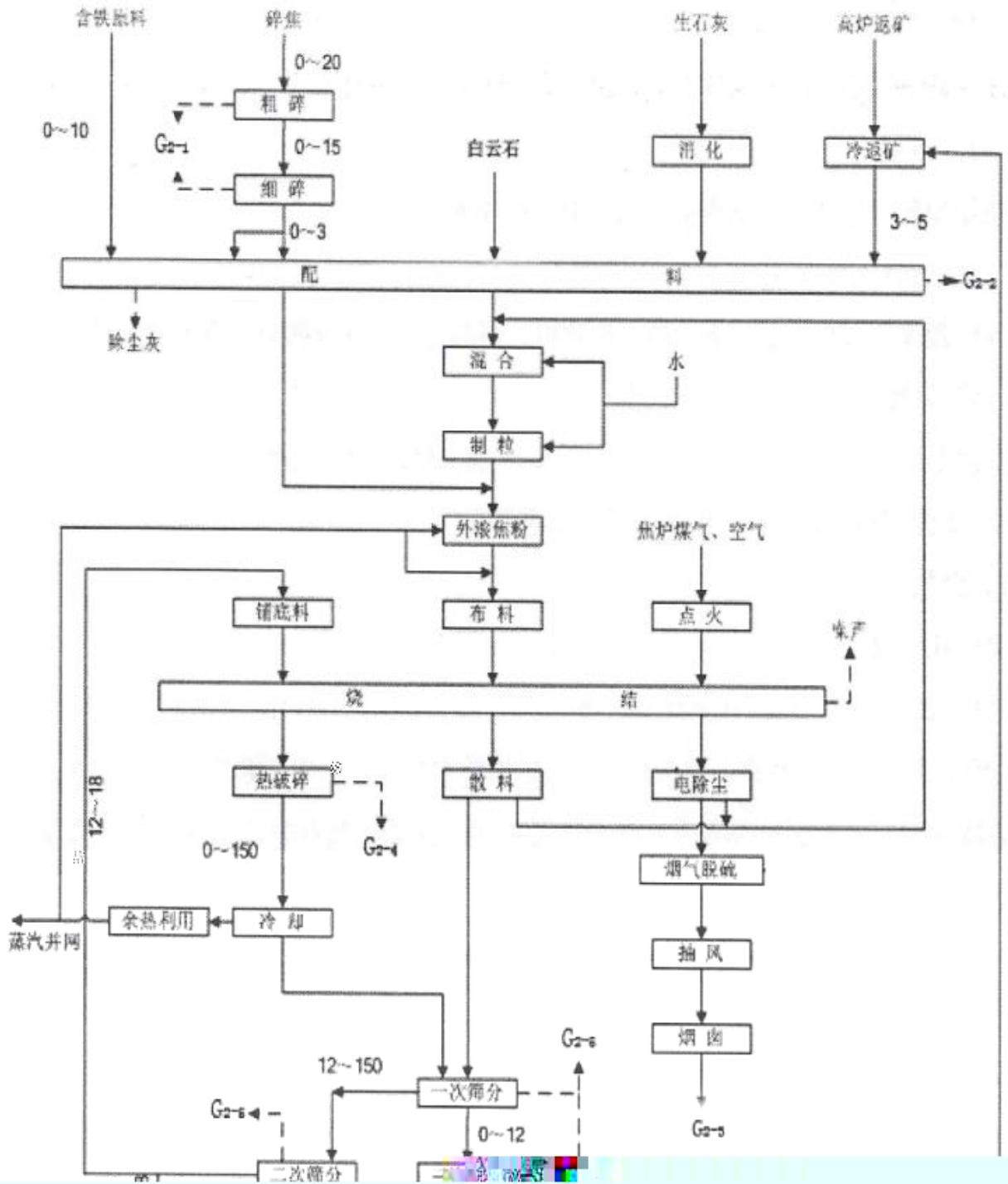
		130m ³	2
		113m ³	2
		75m ³	1
		220m ³	2
		1200x1000	4
		B650	8
		B800	24
		B1200	34
		PDx 32SDF1	32
		1000x7180x10	32
		400x2000mm	4
		400	4
		3800x14000mm	2
		4400x18000mm	2
		1282x4046mm	2
		3100x7800mm	2
		XB1640x2460	2
		XB1640x3100	2
		XB1640x2200	2
		900x700	2
		B650	15
		B1000	12
		B1200	2
		1000x5000x10	15
		J360	2
		3000x12000mm	1
		3000x12000mm	1
		1500x2740mm	2
		XBSFJ-1 185x500	1
		XBSFJ-1 185x520	1
		-137	4
		HYC-5500	1
		420m ³ ×2	2
		1250m ³	1
		1650m ³	2
		KJ-IA(DLYA)	2
		YYG250C2-13	2
		KJ4000F	4
		KD300	2
		KD100	2
		YP3080	4
		Y4-2×73-23F	1
		Y4-73-24.5D	1
		Y4-2×73-1NO23F	1
		Y5-2×51-11NO23.5F	2
		Y4-2×73-21F	1
		Y4-73-11NO-25D	1

	Y4-73-23D	1
	Y4-2×73-1NO23F	2
	9-38-140GB/T13275-9	2
	9-26-12-50	2
	9-19-11-160	2
	1750SIBB50	2
	1850SIBB50D	2
	130×8000	3
	130×6000	2
	176×6000	9
	176×6000	5
	60m	2
	75m	2
		1280 1 3
		1650 1 3
		1650 1 3
		350 1 3
		420 1 3
	4800x3540x6972	3
	2420x1340	3
	800x600	3
	TZ3B-01-02	6
	6000x2400	3
	6mx8mx6m	3
	12mx8.5mx1.2m	2
	14mx8mx4m	1
	9mx16mx6m	3
	1m ³	3
	11m ³	2
	100m ³	1
	2.87m ³	1
	20m ³	2
	1.38m ³	13
	3m ³	4
	13m ³	1
	1.5m ³	2
	0.5m ³	1
	10m ³	3
	5.09m ³	2
	6m ³	1
	3.4m ³	2
	50m ³	1
	18m ³	1
	KQSN600-M9/751	8
	XBC5.9/410-400N9/486	4
	KQSN350-M6/654	8
	XBC6.0/210-300M9/445	4

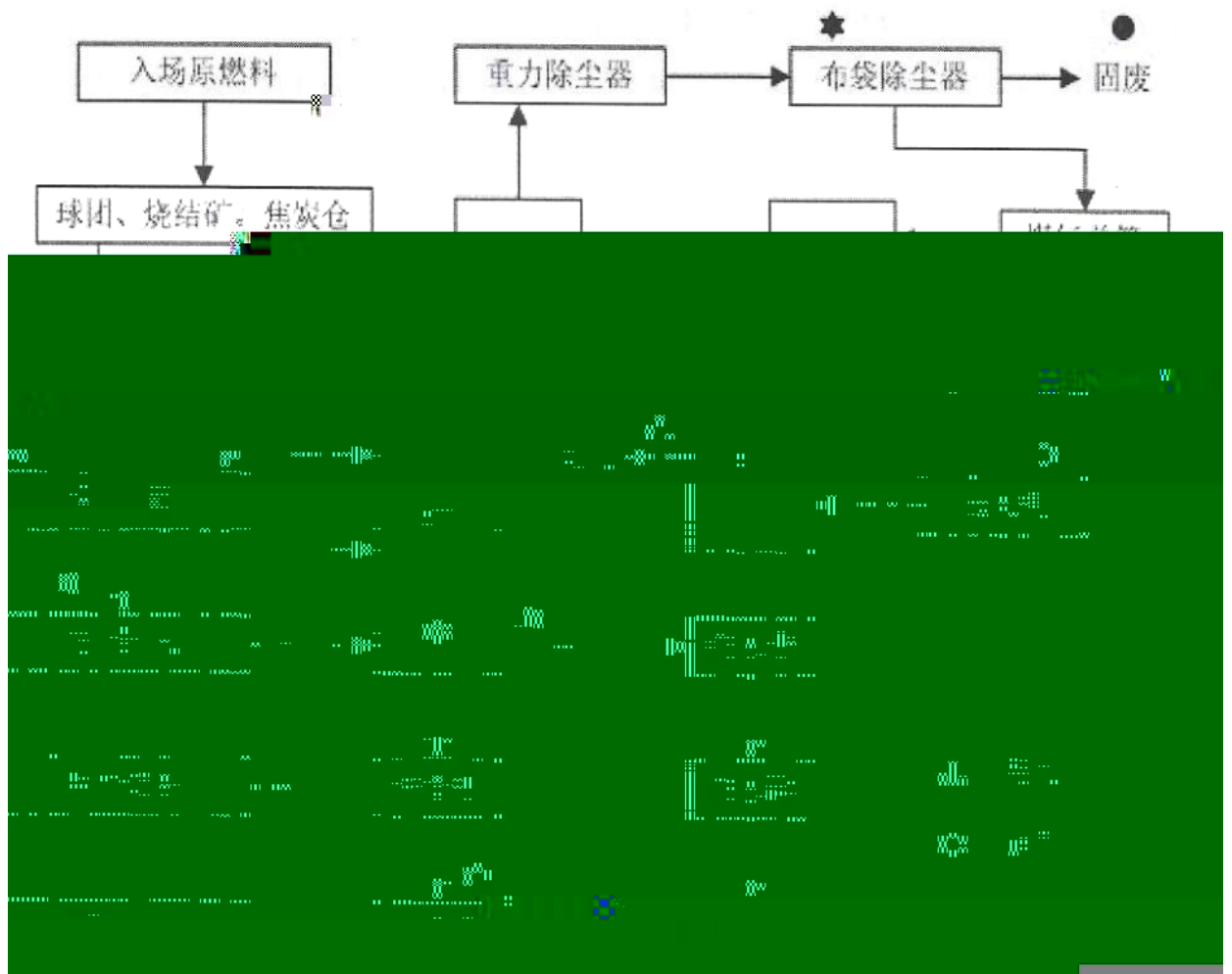
		KQSN150/460-75/4	12
		XBC8.0/55-W150*25*4	4
		KQSN300 N9/445	8
		KQSN150-M9/206 T	12
		KQSN300-M9/387 T	12
		KQSN250-M9/327	8
		KQSN300-M13/313	12
		LF-47(B) :7.35 ×104m ³ /h	8
		DN300	5# 2
		DN450	5# 2
		JHGXY-3600	5# 2
		ZP9x3	
		LF50S	5# 2
		3600	4# 2
		STDN450	4# 2
		GSL-3.0	1# 1



2.3-4



2.3-5



2.3-6

1

(1)

(<3mm)

2

(2)

16

(3)

1

(4)

1

(5)

10 20mm

30 50mm

150mm

150

(6)

3

2

>5mm

>10mm

5 10mm

10 20mm

>20mm

(7)

(8)

0.8Mpa

170 °C

1

35t/h

(9)

2

PC PLC

Ca(OH)₂

²/g

JB/T 11076-2011

FOSS®-D

120-150

SO₂ SO₃ NO₂

70

15

SO₂

SO₃ NO₂

4 6m/s

6~8

SO₃

15

800 1000g/Nm³

10mg/Nm³

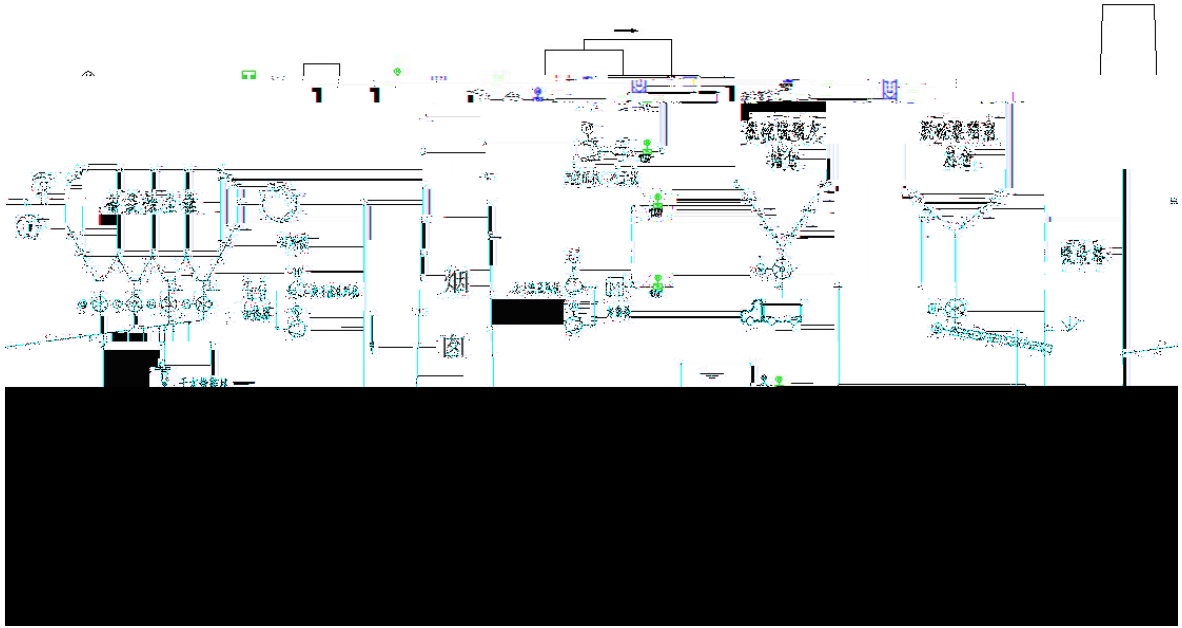
FOSS®-D

NO NO₂ NO SO₂
NO SO₂ NO NO₂ NO
SO₂ NO NO
NO NO

SO₂/NO_x

SO₂/NO_x

2.3-7



2.3-7

0.5ng-TEQ/m³

150

2

(1)

(2)

/

2

30min

10min

20min

20min,

120t

(3)

(6)

4

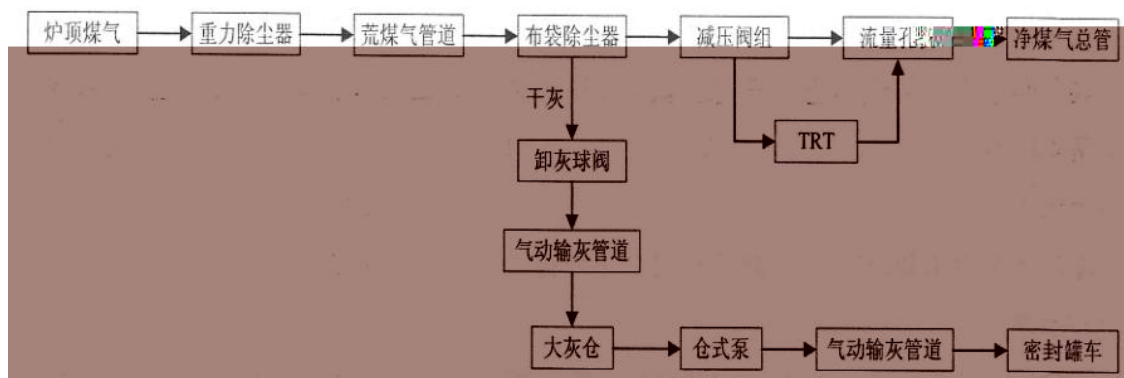
1

1

6~10g/m³

(7)

2.3-8



2.3-8

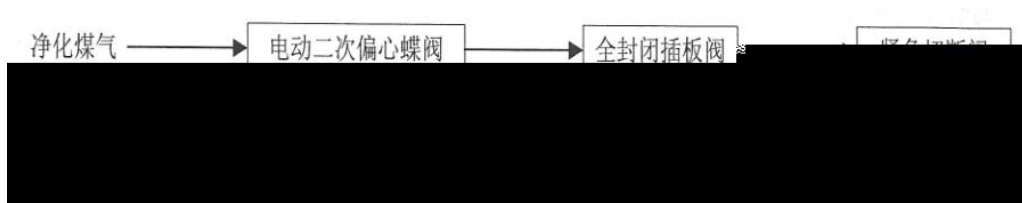
90~260 °C

260 °C

90 °C

TRT

TRT)



2.3-9 TRT

8

TRT

TRT

TRT

2.3-10

2.4

3

2.4.1

HJ 941-2018

5

11		1527	SE	607		0531-76550196
12		1619	S	1937		0531-76523498
13		1719	SE	1138		0531-76550154
14		1720	S	1055		0531-76523147
15		1959	NE	1022		0531-76522545
16		2042	E	875		0531-76521479
17		2056	SE	1068		0531-78550117
18		2110	E	291		0531-76656029
19		2168	S	1439		0531-76236879
20		2284	W	792		0531-76518328
21		2439	NE	2307		0531-76522992
22		2480	NW	1907		0531-76522927
23		2580	E	100		0531-76656211
24		2631	N	1068		0531-76521478
25		2652	NW	967		0531-76620422
26		2707	W	1407		0531-76511319
27		2763	NE	2084		0531-76521029
28		2810	E	367		0531-76628230
29		2852	SW	2357		0531-76518326
30		2920	S	1966		0531-76520184
31		2950	SW	691		0531-76518328
32		2950	N	894		0531-76523684
33		3063	S	502		0531-76520178
34		3072	NE	1273		0531-76521478
35		3073	NW	732		0531-76520456
36		3123	NW	937		0531-76526457
37		3199	SW	899		0531-76518241
38		3200	E	369		0531-76655193

54		3976	SE	1761		0531-78615188
55		3997	S	933		0531-76520913
56		4117	NW	903		0531-76526182
57		4144	N	805		0531-76524217
58		4160	SE	367		0531-78615261
59		4162	W	682		0531-76511283
60		4189	S	611		0531-76520040
61		4212	NW	592		0531-76521456
62		4416	N	537		0531-766523146
63		4509	SW	2482		0531-76501233
64		4601	W	468		0531-76503351
65		4652	SW	1677		0531-76636137
66		4671	NW	507		0531-76546267
67		4676	SW	530		0531-76608238

3

3.1

[2018]14

M E Q

[- Q1-M2-E1 + - Q2-M2-E3]

3.2

3.2-1

1				
2				
3				
4				
5				
6				

3.3

DCS

/

1

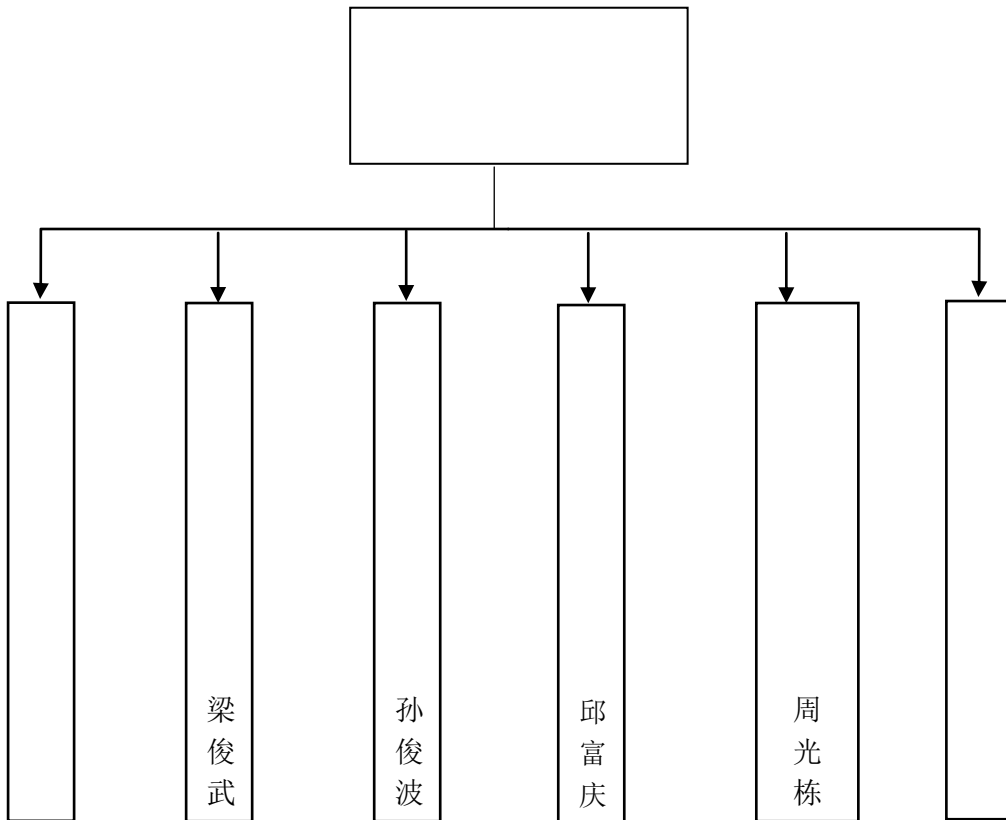
2

()

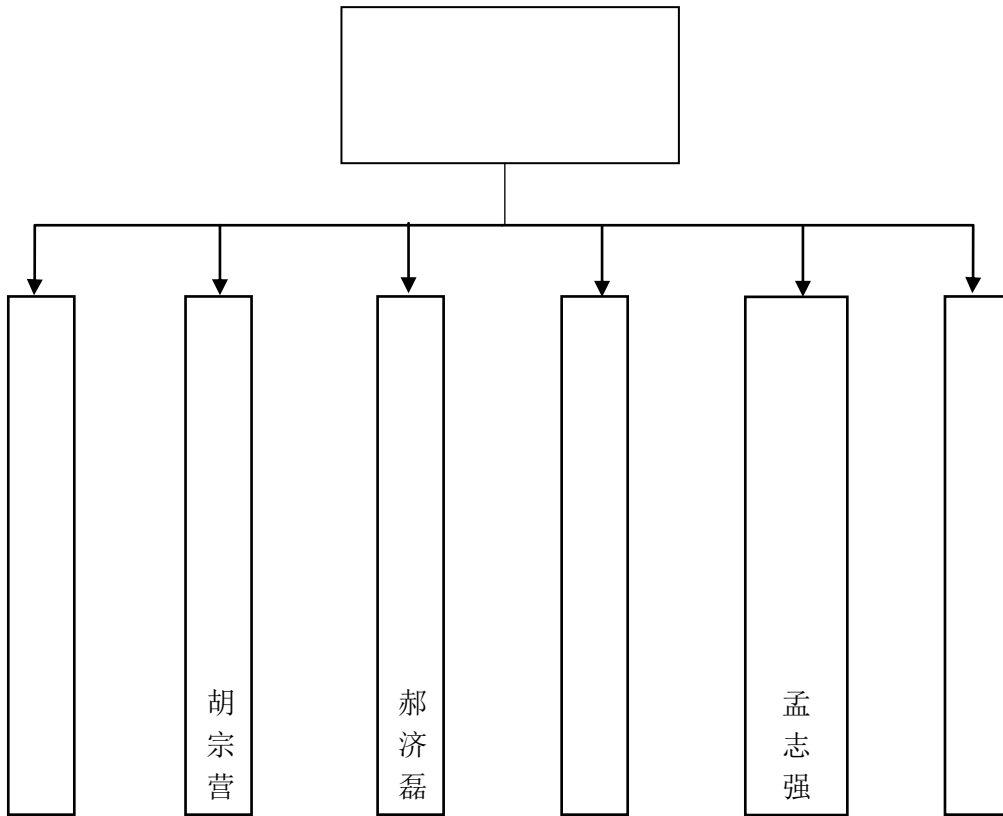
()

4

4.1



4.1-1



4.1-2

4.2

4.2.1

1

2

3

4

4.2.2

1

2

1

2

3

4.2.3

1

2

4.2.4

1

2

3

1

2

4.2.5

1

2

3

1

2

3

4.2.6

1

1

2

3

4

1

2

4.2.7

1

4.2.8

4.3

4.3-1

4.3-1

	1#	RHZKF	4		
	3#	RHZKF	2		
		PZKF6.8/30	2		
		RHZKF6.8/30LH2 001	2		
	4#	RHZKF6.8/30LH2 001	2		
		RHZKF6.8/30	2		
		RHZKF6.8/30	2		
		RHZKF6.8/30	4		
	5#	RHZKF 6.8/30	2		
		RHZKF 6.8/30	2		
		RHZKF 6.8/30	2		
		RHZRF6.8/30	4		
	1#2#	RHZK6.8	2		
	3#4#	TRP:CRP111_144 6.8 30 T	1		
		Type cRP111-144-6.8-30 -T	1		
		50	150m		
	1#	35kg	1		
		8kg	3		
		4kg	3		
		35kg	4		1

			2	2	
		4kg	2	1	
		8kg	1		
		35kg	2		
		8kg	3		
		8kg	3		
	3#	MFZ/ABC8	2		
		MFZ/ABC8	2		
		MFZ/ABC8	2		
		MFZ/ABC8	1		
		MF/5	1		
		MFTE/ABC35	1		
		MFTE/ABC35	1		
		MFTE/ABC35	1		
	4#	MFZ/ABC4	4		
		MFZ/ABC4	8		
		MFZ/ABC4	4		
MFZ/ABC4		7			
4#	MFZ/ABC4	11			
	MFZ/ABC4	4			
	MFTZ/ABC35	2			
	MFTZ/ABC35	1			
	MFTZ/ABC35	2			
	MFTZ/ABC35	4			
	MFTZ/ABC35	2			
	MFTZ/ABC8	3			
	5#	MFZ/ABC4	3		
		MFZ/ABC5	3		
		MFTZ/ABC8	8		
		MFZ/ABC	2		
		MFTZ/ABC8	6		
		MFTZ/ABC4	8	L1/L2	
		MFZ/ABC 8	6		
		MFZ/ABC 8	6		
		MFZ/ABC 8	1		
MFTZ/ABC35		6			
MFTZ/ABC 35		1			
MFTZ/ABC 35		1			
MFTZ/ABC 35	2				

	5#	16kg	4			
	2#3#	8kg	1			
		35kg	1			
	1#	8kg	1			
		35kg	2			
		MFZL8 MFZ/ABC8	50			
		MFTZL35 MFTZ/ABC35	20			
		MFZ/ABC8	1	1#		
		MFZ/ABC8	1	1#		
		MFZ/ABC8	1	2#		
		MFZ/ABC8	1	2#		
		MFZ/ABC8	1	1#		
		MFZ/ABC8	2	2#		
		MFZ/ABC8	1	3#		
		MFZ/ABC8	1	4#		
		MFZ/ABC8	1	5#		
		MFZ/ABC8	1	7#		
		MFZ/ABC8	1	8#		
		MFZ/ABC8	2	6#		
		MFZ/ABC8	1	S102		
MFZ/ABC8		1	2#			
MFZ/ABC8		1	3#			
MFZ/ABC8		1	XG-1			
MFZ/ABC8		1	XG-1			
MFZ/ABC8		1				
MFZ/ABC8		1	J-3			
MFZ/ABC8		1	J-3			
	MFZ/ABC8	1				
	MFZ/ABC8	1				
	MFZL/4	1	YJ-1			
	MFZL/4	1	YJ-1			
	MFZ/ABC8	1	YJ-2			
	MFZ/ABC8	1	YJ-2			
	MFZ/L8A	1	1 2			
	MFZ/L8A	1	1 2			
	MFZ/ABC8	1				
	MFZ/ABC8	1				
	MFZ/ABC8	1				
	MFZ/ABC8	1				

		MFZ/L8	1	FK-1
		MFZ/ABC8	1	GF-1
		MFZ/ABC4	1	K403
		MFZ/ABC8	1	S201
		MFZ/ABC8	1	4
		MFZ/ABC8	1	GF-1
		MFZ/L8	1	GF-1
		MFZ/L8	1	GF-1
		MFZ/ABC4	1	K503
		MFZ/ABC8	1	22#
		MFZ/ABC8	1	22#
		MFZ/ABC35	1	22#
		MFZ/ABC8	1	4#
		MFZ/ABC8	1	4#
		MFZ/ABC8	1	5#
		MFZ/8	1	5#
		MFZ/ABC35	1	5#

MFZ/ABC4

		MFZ/ABC4	2	3#
		MFZ/ABC4	2	3#
		MFZ/ABC4	2	3#
		MFZ/ABC4	2	3#
		MFZ/ABC4	2	3#
		MFZ/ABC4	2	3#
		MFZ/ABC4	2	3#
		MFZ/ABC4	2	3#
		MFZ/ABC4	2	3#
		MFZ/ABC4	6	3#
		MFZ/ABC4	12	3#
		MFZ/ABC4	5	4#
		MFZ/ABC4	2	4#
		MFZ/ABC4	2	4#
		MFZ/ABC4	2	4#
		MFZ/ABC4	2	4#
		MFZ/ABC4		

		MF2/ABC 35kg	1			
		MF2/ABC 8kg	3			
		MF2/ABC 35kg	1			
		MF2/ABC 8kg	2			
		MF2/ABC 4kg	2			
		MF2/ABC 8kg	2			
	3#	MT/7	2			
		MT/7	1			
		MT/7	1			
		MT/7	2			
CO ₂		MT/7	2			
		MT/7	2			
		MT/7	12			
	4#	YYJ-836	4			
		YYJ-836	6			
		YYJ-836	1			
CO ₂		PZ-S203	6	3#		
		PZ-S203	6	4#		
		PZ-S203	1	3#		
		PZ-S203	1	4#		
		PZ-S203	1	3#		
		PZ-S203	1	4#		
	4#	YYJ-836	4			
		YYJ-836	6			
		YYJ-836	1			
			PZ-S203	6	3#	
			PZ-S203	6	4#	
			PZ-S203	1	3#	
			PZ-S203	1	4#	
			PZ-S203	1	3#	
			PZ-S203	1	4#	
			PZ-S203	1	4#	
	3#		YC-8FZD-E3W-52 05	4		
			YC-8FZD-E3W-52 05			
			YC-ZFZD-E3W-S 205		/	
			XIAOFAN6	1		
			YC-ZFZD-E3W-S 205	3		
	1#		H002430	5		
			H002430	2		

	5#	YYJ-938	4			
		YYJ-938	1			
		YYJ-938	1			
		YYJ-938	1			
		YYJ-938	15			
			YC-ZFZD-E3N-92 09	1	1#	
			YC-ZFZD-E3N-92 09	1	2#	
					22#8#	
CO	1#	4888B	2			
		D1502TIE0671	1			
		D1-08D	2			
CO	2#	DJ-08D	5			
		DJ-08D	4			
		CT-1020	1			
	3#		DT-08D	5	2	
			DT-08D	1	3	
			RB-KY RB-TZ	2		
			DT-08D	1		
			4888B	1		
			4888B	1		
			4888B	1		
			4888B	1		
			4888B	1		
			RB-KY	1		
			OT-08D	1		
			DT-08D	1		
			DT-08D	1		
			DT-08D	1		
			D14080038D	1		
			D14080032D	1		
			D14080029D	1		
D14080037D	1					
D14080026D	1					

		D150211D1050	1			
		D150211D1044	1			
		D150211D1042	1			
	4#	4888B	7			
		4888B	3			
		4888B	9			
		4888B	2			
		DT-08D	6			
DT-08D	2					
CO	5#	GT-1020	16			
		GT-1020	12			
		GT-1020	28			
		GT-1020	1			
		RB-TZ BB-PZD S) DT-08 DT-08D	17			
CO		XORYMCS-B	6			
		DT-08D	3			
		RB-TZ	1			
		SK-CO	1			
		RB T211	2			
		WT3411	4			
		DT 02 D	1			
		MD100	1			
				2	1#3#	
	CO	1#	ImpulseXP	1		
IMPCCLS8XP			2			
IMPCCLS8XP			1			
ImpulseXP			1			
ImpulseXP			1			
3#		Impulsexp	1			
		X12140201	1			
		X09240397	1			
		X10290139	1			
		X14290006	1			
4#		IMPULSEXP	2			
		IMPULSEXP	1			
		IMPULSEXP	3			

		IMPULSEXP	2	
		MG-01BD	1	

		10		
	2000m ³	2	2# 1000m ³ 1000m ³	
		5		

4.4

4.4-1~4.4-2

4.4-3

4.4-1

	24	0531-75819713	75819723	
			15006809518	
			13563465995	
			13356226061	
			18263413309	
			18263480788	
			18263439261	
			15006809518	
			13561716868	
			15263413636	
			13963415098	
			18703569518	
			15163456664	
			13963440705	
			13370605003	
			13963477486	
			18263412244	
			13561740446	
			18703569518	
			18363409169	
			13563444628	
			13863429498	
			15163424203	
			15263446719	
			18463423796	
			13646347826	
			13863419772	

			15263408528	
			13561748414	
			13963421552	
			13863428388	
			13646346039	
			13963446698	
			13906347140	
			18363471428	
			15963858893	
			13863485200	
			15163454356	
			13563406068	
			15106341605	
			13561745866	
			13563480008	
			18363409169	
			13646347826	
			15963858893	
			13561729024	
			13863485200	
			18363454844	
			13506348688	
			13561738442	
			18363450128	

15263402824

				18766342202	
--	--	--	--	-------------	--

4.4-2

	24		0531-5819288		
				13561716868	
				13455893077	
				13356226061	
				18263413309	
				18263480788	
				18263439261	
				15006809518	
				13561716868	
				15263413636	
				13963415098	
				13506343316	
				15866340126	
				13863447397	
				13561715698	
				13806342099	
				13963401829	
				15863400882	
				14763413462	
				14706341518	
				18763439192	
				15166341778	
				15763465978	
				13863437319	
				15263478471	
				13561741267	
				13963425440	
				13455893444	
				15263405109	
				18763479623	
				15163429192	
				13963473928	
				18763420899	
				13963463628	
				15133641539	

				13561705829	
				13666345744	
				13563408068	
				13563447156	
				13906347140	
				18363471428	
				15963858893	
				13863485200	
				15163454356	
				13561725686	
				13455491187	

13506348688



7				0531-76113155
8				15020866003
9				13863449121
10				0531-76260279

4.5

a 24

b

c

d

e

f

g

h

5

5.1

1

24

2

CO

CO

3

24

4

5

24

5.2

5.2.1

1

2

3

4

5

6

7

8

9 2#

1 1000m³

1#-3#

1 1000m³

4#

5#

10

5.2.2

1

2

3 /

4

5

6

7

8

9

5.2.3

1

2

3

4

5.2.4

1

2

3

4

5

6

5.2.5

1

2

3

4

5

6

5.2.6

5.2.7

5.3

5.3.1

1

2

3

5.3.2

1

119 120

3

4

5

6

7

8

5.4

5.4.1

1

2

3

5.4.2

5.4.3

5.4-1

	0531-75819931
	13863449121
	0531-75819002

5.5

5.6

1

6

6.1

6.1.1

1

2

6.1.2

1

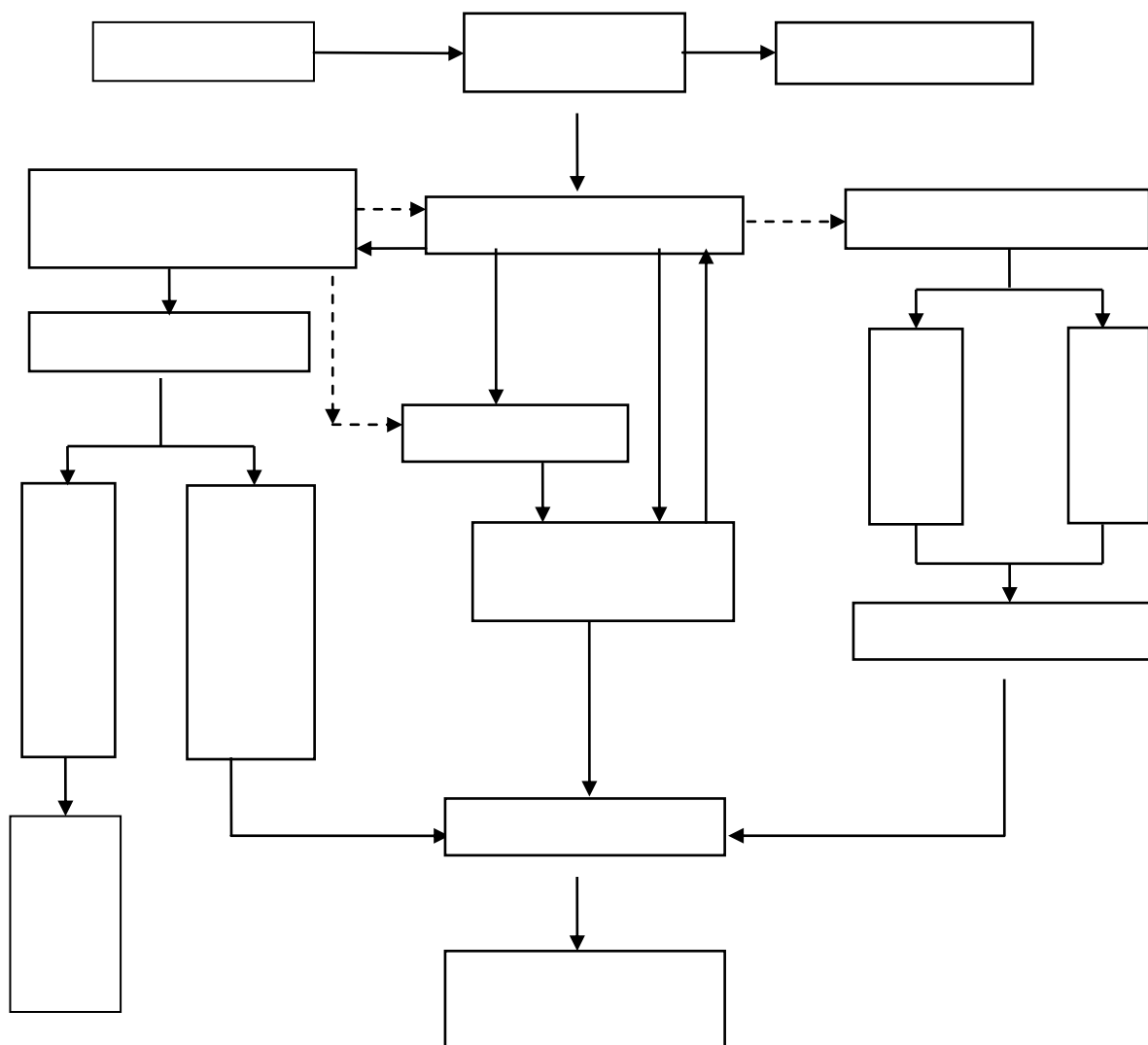
2

3

6.1.3

1

2



6.1-1

B.

1

2

3

6.2.2

1

119

2

3

4

5

6

7

8

(

)

9

10

6.2.3

200

1

2

3

4

5

6

6.2.4

1

2

3

4

40

5

5

6

7

8

9

6.3

6.3.1

6.3.1.1

6.3.1.2

1

5

2

3

4

5

14--16

14--16

6.3.2

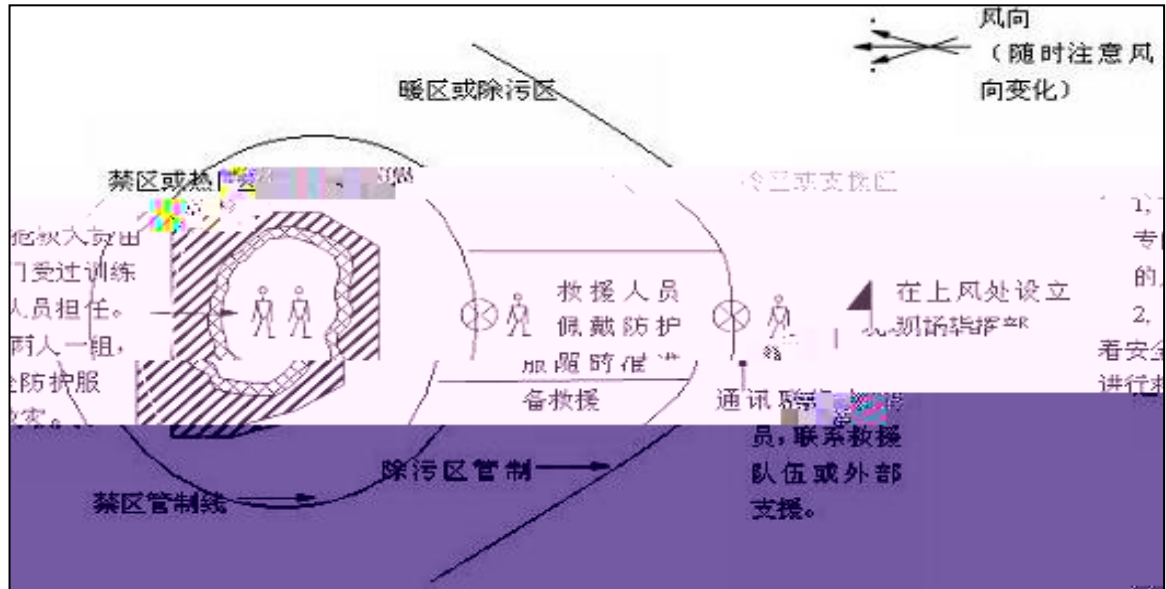
2

6.3.4-1

6.3.4-1

		()
		()
		()
		()
		()

3



6.3-1

6.4

6.4.1

6.4.1.1

()

()

() ()

()

6.4.1.2

/

1

2

/

6.4.1.3

6.4.1.4

1

2

a.

()

b.

) ()

3

a.

b.

c.

d.

e.

f.

6.4.1.5

1

2

6.4.2

6.4.2.1

1

pH

BOD₅

a

pH

a

2

4

2

6.4-1 2

2

1

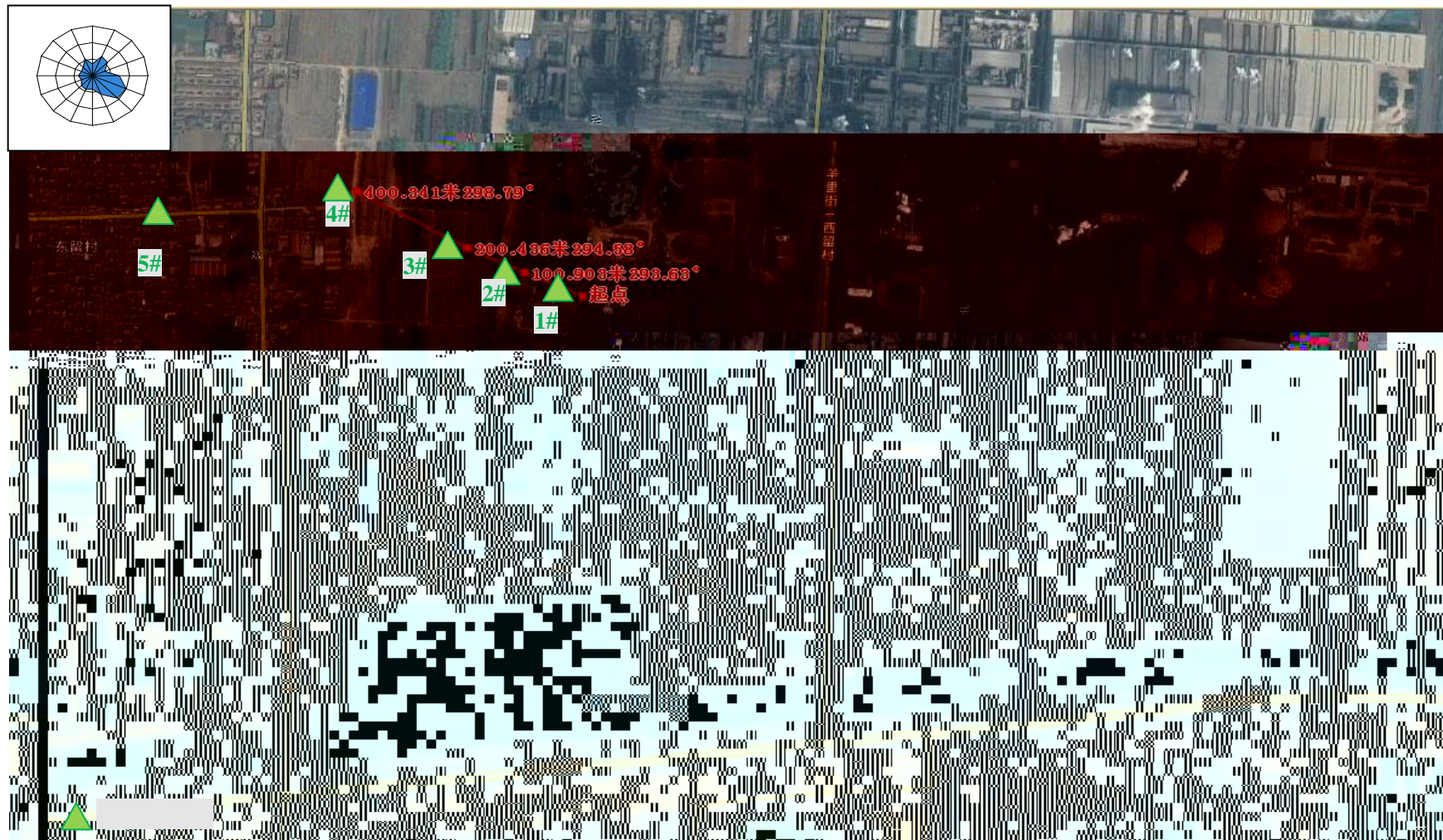
6.4.2.2

1

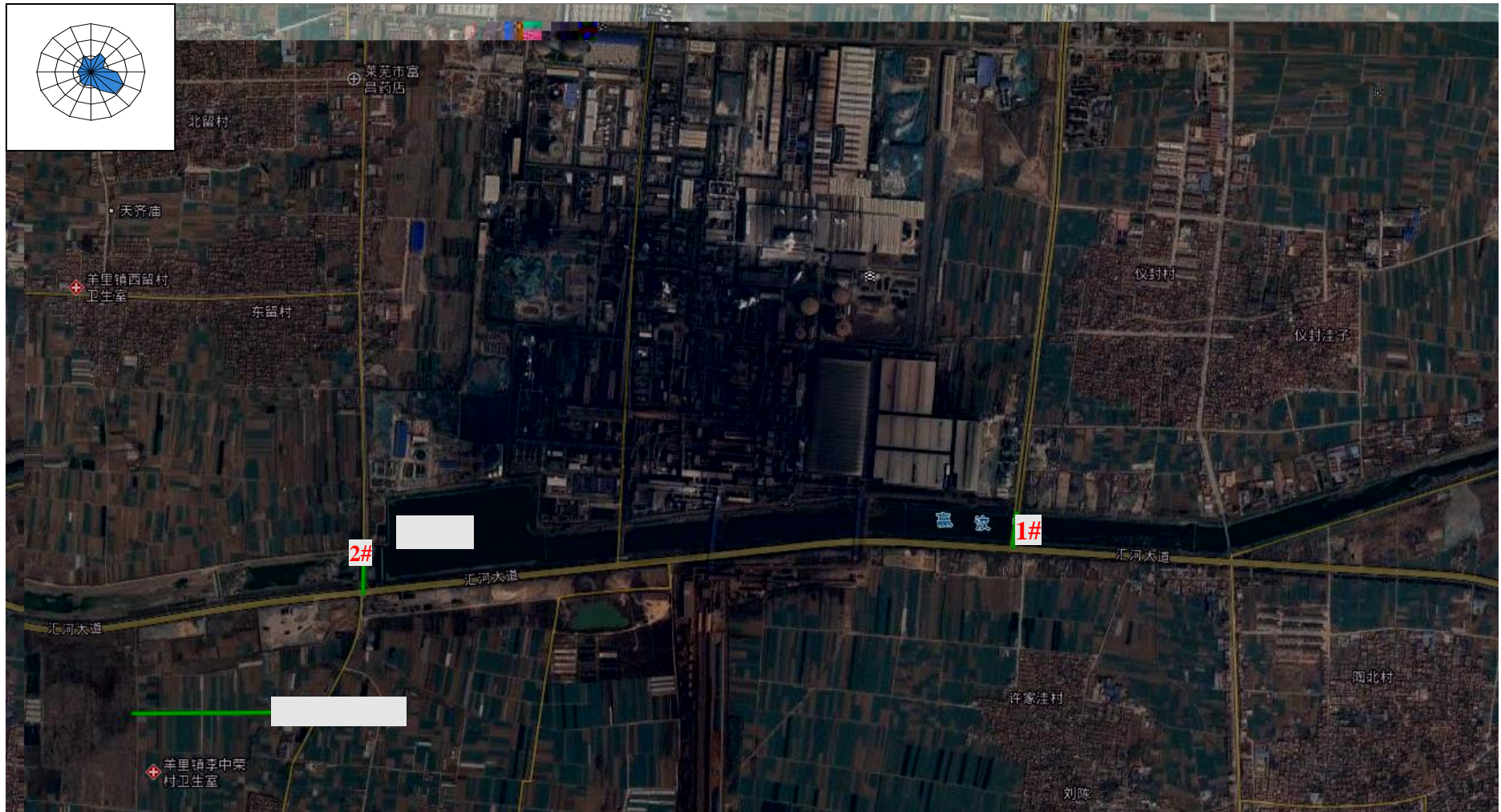
2

0m

1# 100m 2# 200m 3#



6.4-1 1



6.4-1 2

6.5

6.5.1

1

1

2

6.5.2

6.5.3

6.6

1

2

3

7.1

7.1.1

1

2

3

4

5

6

7.1.2

/

/

7.2

1

2

8

8.1

6

8.2

1

2

24

3

8.3

8.4

8.4.1

2012 16

8.4.2

8.4.3

110

8.4.4

8.4.5

8.4.6

1

2

3

4

5

6

7

8

8.4.7

9

9.1

1

2

9.2

1

1

2

3

4

5

2

1

2

3

- 4
- 5
- 6
- 3

- 1
- 2
- 3
- 4
- 5
- 6

9.3

- 1
- 2
- 3

1

2

3

4

5

9.4

9.4.1

1

2

3

4

5

6

7

8

9.4.2

1

2

3

4

10

10.1

1

1

2

3

2

3

4

HJ/T 298

5

6

7

8

9

10

11

10.2

10.3

1

1.1

1.2

1.3

1.3.1

1.3.2

1.3.3

1

2

3

4

5

6

1.3.4

1

2

1.3.5

1.3.6

2

1

2

3

3.1

5.1

5.2

3.2

1

1

2

3

4
5
2

4

4.1

4.2

1
1 2
3 4 5
2
3
4
1 2 3
4 5 7
6 8 9

5

5.1

1

6.3-

1351m

2

3

4

6.3-

500m

5

/

5.2

/

/

6

1

2

3

4

1

1.1

1.2

1.3

1.3.1

1.3.2

1.3.3

1

2

3

/

4

5

6

7

8

9

/

2

1

2

3

3.1

5.1

5.2

3.2

1

1

2

3
4
5
2

4

4.1

4.2

1

1

2

3

4

5

2

3

4

1

2

3

4

5

6

7

8

9

10

11

5

5.1

1

119

2

3

4

5

6

7

8

(

)

9

10

1

2

3

5.2

200

6

1

2

3

4

3

4

9

5

6

7

8

,

,

,

9

15

3.2

3.2.1

1351m

3.2.2

100mm

100mm

100Pa

4

5

1

2

2.1 1. 0. 10CS

2.2

4

3

4

5

6

7

8

3.2.2

1

2

3

4

4

- 1
- 2
- 3
- 4
- 5
- 6
- 7
- 8
- 9
- 10
- 11
- 12
- 13

- 1
- 2
- 3
- 4
- 5
- 6
- 7
- 8
- 9
- 10
- 11
- 12
- 13

5km

10km